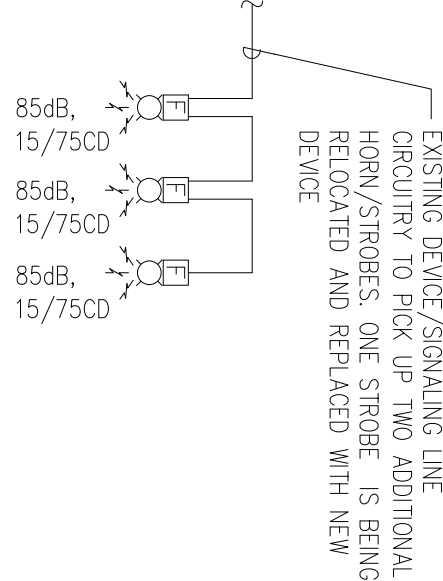


A Electrical Lighting Plan
1/4"=1'-0"



B Partial Fire Alarm Riser
NOT TO SCALE

Fire Alarm Notes:

- 1. NEW FIRE ALARM DEVICES SHALL BE COMPATIBLE WITH EXISTING FIRE ALARM SYSTEM. THEY SHALL BE INSTALLED AND TERMINATED TO EXISTING SYSTEM BY A NICET LEVEL 2 FIRE ALARM TECHNICIAN.

Note:

- 1. CONNECT TO EXISTING EMERGENCY CIRCUIT IN CORRIDOR. ELECTRICAL CONTRACTOR SHALL VERIFY EXISTING CIRCUIT IN CORRIDOR PRIOR TO CONNECTION.
- 2. PROVIDE 3-WAY SWITCH IN EXISTING BOX. CONTRACTOR SHALL RE-SWITCH FIXTURES AS INDICATED ON DRAWING.
- 3. PROVIDE SINGLE POLE SWITCH AND RE-SWITCH FIXTURES FOR BI-LEVEL SWITCHING AS INDICATED ON DRAWINGS.

RECORD DRAWING

This drawing is revised to show construction conditions in place based on mark-up drawings provided by the Contractor utilizing methods of reasonable practice and care. Field verification by the Engineer was not provided.

Date: _____
By: _____

CRIBB CONSULTING ENGINEERS, P.C.
3809 Peachtree Avenue, Suite 201
Wilmington, N.C. 28403

Phone: 910.793.5909 Email: ccenpc@bellsouth.net

WALSH ARCHITECTS INCORPORATED
PO BOX 541, NEWBERN NC 28563
252.636.8778 252.636.9920(FAX)

UNC-Wilmington

**601 South College Rd.
Wilmington, NC 28403**

**Dobo Hall
Chemistry Lab 121
Renovation**

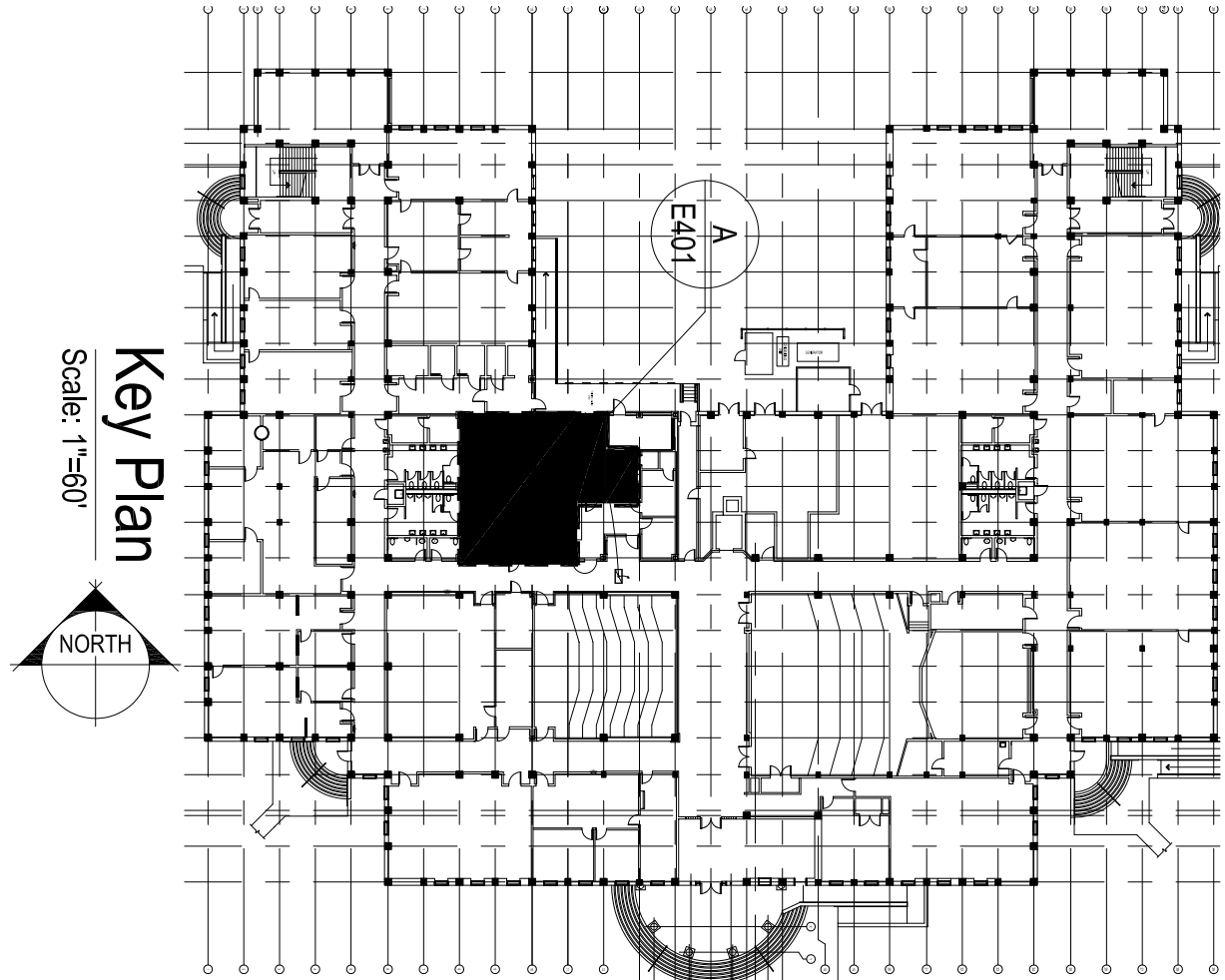
J:\Walker\Bosch\0505551.dwg

UNCW

601 South College Road
Wilmington, NC 28403
910-962-3000
www.uncw.edu

Revisions	
No.	Date

Project Number: 0414
Date: 3/21/2005
Drawn: HGH
Checked: WAC
Scale: As Noted
Drawing Title: Electrical Lighting & Fire Alarm Plan and Schedule
Sheet Number: 4 of 4
Drawing Number: E-103



Key Plan
Scale: 1"=60'
NORTH

E-103